

Horizontal Mounting Track



Model Number	Description	Wgt.	List
HT-96	Horizontal Mounting Track 96"	10	\$155

- Available in 8' sections • Anodized aluminum

Horizontal Mounting Track End Cap (HTAEC)



Model Number	Description	Wgt.	List
HTAEC	1"W x 2.75"L x .25"H	0.2	\$12

Horizontal Mounting Track Connector Splice (HTACS)



Model Number	Description	Wgt.	List
HTACS	1.25"W x 3"L x 16 gauge	0.01	\$9

Horizontal Mounting Track #12 Screw (HTWS-2)



Model Number	Description	Wgt.	List
HTWS-2	#12 x 2" Wood Screw	0.01	\$5

Horizontal Mounting Track Anchor Bolt (HTAB)



Model Number	Description	Wgt.	List
HTAB-1.5	1/4-20 x 1.5"	0.01	\$6
HTAB-2.5	1/4-20 x 2.5"	0.02	\$6
HTAB-3	1/4-20 x 3"	0.02	\$6

Horizontal Mounting Track Toggler Anchor (HTDST)



Model Number	Description	Wgt.	List
HTDST	1/4-20 anchor x 1.5"W x 3"L	0.02	\$8

Anchor Bolt Double Expansion (HTDEA-1.25)



Model Number	Description	Wgt.	List
HTDEA-1.25	1/4-20 x 1-1/4"	0.01	\$7

Nylon Tipped Set Screw (HTNSS)



Model Number	Description	Wgt.	List
HTNSS-.1875	10-32 x 3/16"	0.01	\$7
HTNSS-.25	10-32 x 1/4"	0.01	\$7
HTNSS-.75	10-32 x 3/4"	0.01	\$7

Track Spacer Template (HTSP)



Model Number	Description	Wgt.	List
HTSP	53"L x 4"W x .625"H	2	\$208



Adjustable Vertical Standard Track (VST)

Model Number	Description	Wgt.	List
VST	8"W x 18"L x 1"H	8	\$80

Adjustable Worksurface Support Arm (WSA)



Model Number	Description	Wgt.	List
WSAPL-16	Left, 16" depth	6	\$45
WSAPL-22	Left, 22" depth	9	\$49
WSAPR-16	Right, 16" depth	6	\$45
WSAPR-22	Right, 22" depth	9	\$50
WSAPS-16	Shared 16"	4	\$33
WSAPS-22	Shared 22"	5	\$45

Worksurface Mending Plate (WMP)



Model Number	Description	Wgt.	List
WMP	3"W x 3"L	0.25	\$18

Worksurface Support Bracket (WSB)



Model Number	Description	Wgt.	List
WSB	3"W x 3.5"L x 1.5"H	0.5	\$21

Horizontal Mounting Track Flag Holder (HTAFH)



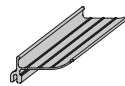
Model Number	Description	Wgt.	List
HTAFH	1"W x 2.75"L x .25"H	0.05	\$53

Horizontal track PVC Wire Manager (HTAWM)



Model Number	Description	Wgt.	List
HTAWM-48	48" Section	2	\$28
HTAWM-96	96" Section	4	\$52

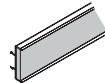
Utensil Tray (UT48)



Model Number	Description	Wgt.	List Price
UT48	48"W Section	3	\$122

- Anodized aluminum

Cork Strip (CS48)



Model Number	Description	Wgt.	List Price
CS48	48"W Section	3	\$78

Cabinet Jack (HCJ)

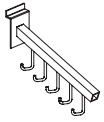


Model Number	Description	Wgt.	List Price
HCJ-223770-F880)	880 lb. Capacity		\$3,189

Foot operated hydraulic pump, for use with base, wall and tall units, 880 lb. capacity allows loaded or unloaded cabinets to be moved, adjustable width forks, swivel casters with brakes.

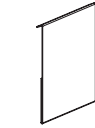
P-ELEMENTSTRACKACC-210201

Track & Accessories



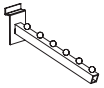
Hook Waterfall (SAWF)			
Model Number	Description	Wgt.	List
SAWF-B	2"W x 16"L x 3"H	5	\$20
SAWF-C	2"W x 16"L x 3"H	5	\$20
SAWF-W	2"W x 16"L x 3"H	5	\$20

- 3/4" square tube
- Hooks
- Available in 3 finishes



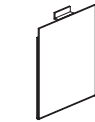
- Clear acrylic

Economy Clear Acrylic Sign Holder (SAESH)			
Model Number	Description	Wgt.	List
SAESH-57	5.5"W x 7"H	1	\$18
SAESH-811	8"W x 11"H	1	\$42
SAESH-1117	11"W x 17"H	2	\$42
SAESH-1711	17"W x 11"H	2	\$42



Ball Hook Waterfall (SABW)			
Model Number	Description	Wgt.	List
SABW-B	2"W x 16"L x 3"H	5	\$20
SABW-C	2"W x 16"L x 3"H	5	\$20
SABW-W	2"W x 16"L x 3"H	5	\$20

- 3/4" square tube
- Ball hooks
- Available in 3 finishes



- 1/4" thick

Clear Acrylic Sign Holder (SASH)			
Model Number	Description	Wgt.	List
SASH-57	5.5"W x 7"H	1	\$35
SASH-811	8"W x 11"H	1	\$70
SASH-1117	11"W x 17"H	2	\$70
SASH-1711	17"W x 11"H	2	\$70



Small Wire Basket (SASB)			
Model Number	Description	Wgt.	List
SASB-B	12"W x 6"D x 6"H	2	\$34
SASB-C	12"W x 6"D x 6"H	2	\$34
SASB-W	12"W x 6"D x 6"H	2	\$34

- Extends 6" from wall
- 12" wide, 6" deep
- Available in 3 finishes



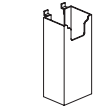
- 3/16" thick clear acrylic

Clear Acrylic Tilting "J" Racks (SAR24)			
Model Number	Description	Wgt.	List
SAR24	5.25"D x 24"L	2	\$69

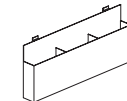


Deep Sloping Wire Basket (SADSB)			
Model Number	Description	Wgt.	List
SADB-B	12"W x 12"D x 8-3"H	3	\$45
SADB-C	12"W x 12"D x 8-3"H	3	\$45
SADB-W	12"W x 12"D x 8-3"H	3	\$45

- Extends 12" from wall
- 12" X 8" X 3"
- Available in 3 finishes



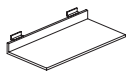
Single Pocket Literature Holder (SASP)			
Model Number	Description	Wgt.	List
SASP-49	4"W x 9"H	1	\$29
SASP-811	8"W x 11"H	1	\$48



Three Pocket Literature Holder (SATP)			
Model Number	Description	Wgt.	List
SATP	8.5"W x 11"H	3	\$107

P-ELEMENTSTRACKACC-210201

Track & Accessories



Clear Acrylic Shelf (SAS)			
Model Number	Description	Wgt.	List
SAS12	6"W x 12"L x .25"H	2	\$42
SAS16	6"W x 16"L x .25"H	2	\$48



Pencil Drawer (MCD1817)			
Model Number	Description	Wgt.	List
MCD1817	18"W x 17"D x 2"H	10	\$357



Slatwall Plastic Bin			
Model Number	Description	Wgt.	List
SPB	10"W x 12"L x 3"H	2	\$35



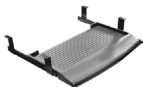
Task Light (TL)			
Model Number	Description	Wgt.	List
TL-18	6"W x 18"L x 2"H	3	\$285
TL-22	6"W x 22"L x 2"H	3	\$297
TL-24	6"W x 24"L x 2"H	4	\$302
TL-28	6"W x 28"L x 2"H	4	\$311
TL-34	6"W x 34"L x 2"H	5	\$322
TL-36	6"W x 36"L x 2"H	5	\$329
TL-40	6"W x 40"L x 2"H	6	\$367
TL-46	6"W x 46"L x 2"H	6	\$375
TL-48	6"W x 48"L x 2"H	7	\$378
TL-60	6"W x 60"L x 2"H	9	\$547



CPU Holder (ACPU-CS-10)			
Model Number	Description	Wgt.	List
ACPU-CS-10	5.25-9.25"W x 15.375-21"H	10	\$152



Rotating CPU Holder (ACPU-CS-11)			
Model Number	Description	Wgt.	List
ACPU-CS-11	5.25-9.25"W x 15.375-21"H	12	\$188



Sliding Keyboard Tray (AAKT001)			
Model Number	Description	Wgt.	List
AAKT001	22.75"W x 12"D	7	\$105



Articulating Keyboard Mechanism (AAKT003)			
Model Number	Description	Wgt.	List
AAKT003	30"W x 20"D x adj. height	20	\$355

P-ELEMENTSTRACKACC-210201

**TERMS & CONDITIONS**

Prices: All prices are F.O.B. the factory. Prices and specifications are subject to change without notice. Prices do not include applicable taxes, special handling or installation charges. Possession of a price list is not an offer to or agreement to sell. We reserve the right to change prices without notice. We are not responsible for typographical errors. In the event a price or description is found to be incorrect, the correct information will be communicated to you when the order is received.

Credit Terms: Open account status is only granted after a completed credit application is received and approved.

Payment Terms: Terms for open account are net 30 days. Terms for orders without open account will be determined by Silver Street, Incorporated on an order-by-order basis and may require prepayment or a 50% deposit with order and the balance prepaid before shipment.

Orders: Orders must be in writing. Faxed orders are acceptable. Processing of orders will not begin until a signed acknowledgment is received.

Acknowledgments: Orders are accepted, manufactured and invoiced based on written acknowledgments issued by Silver Street, Incorporated. All orders are considered correct as acknowledged. Notify Silver Street, Incorporated immediately of any order discrepancies. Acknowledged orders may not be changed or canceled without written consent from Silver Street, Incorporated.

Changes to orders: Changes to orders already in process may be subject to a fee covering the cost to make the requested change. If a fee is necessary a written authorization of acceptance will be required. All requests for changes are subject to approval by Silver Street, Incorporated.

Cancellation of orders: All orders received by Silver Street, Incorporated are considered firm and cannot be canceled without our approval. A cancellation fee may be required based upon cost incurred by Silver Street, Incorporated prior to receipt of a cancellation request.

Returns: Returns are not accepted without a Return Goods Authorization issued by Silver Street, Incorporated. Unauthorized returns will not be accepted. Returns may be subject to a restocking fee.

Shipping Terms: All orders will be shipped F.O.B. shipping point with freight charged collect. Shipping weights listed are net.

Routing: Shipments will be routed "best way" or as specified. Instructions will be followed as closely as possible, however, Silver Street, Incorporated reserves the right to make changes due to local conditions or other circumstances.

Freight Damage: Legal title to merchandise passes to the buyer upon acceptance by the carrier. All cartons must be carefully inspected at the time of delivery. Visible damage should be noted on the delivery receipt. In the case of concealed damage, the carrier must be notified within (5) days. It is the buyer's obligation to seek recourse against the shipper.

Shortages: Shipments should be inspected upon receipt for shortages. Shortages must be reported to Silver Street, Incorporated in writing within (5) days of receipt.

Shipping Address: **MTContract**
892 Industrial Park Drive
Shelby, MI 49455

Warranty: All items manufactured by Silver Street, Incorporated, home of MTContract® and Elements by MTContract are guaranteed against defects for a period of five (5) years from the date of purchase. We will repair or replace, in our discretion, any defective item without cost to our customer. This is customer's sole and exclusive remedy against us. No delay in shipment or delivery shall give rise to any liability for damages whatsoever. We are not liable for defects caused by customer or any third party. Customer is not authorized to make any repairs whatsoever or to deduct any amount from the purchase price. In no event shall our liability under this warranty exceed the purchase price. In no event shall we be liable for incidental, special or consequential damages. We disclaim all other warranties, express or implied, as to any matter whatsoever, including without limitation, quality, design, performance, specifications, samples, condition, merchantability and fitness for any particular purpose. No action may be commenced for breach of the warranty more than six months after the cause of action accrues and any such action may only be brought in the county of Oceana, State of Michigan.

elements

is a registered trademark of Silverstreet Incorporated.

U.S. Patent # 8,434,835 B2

P-ELEMENTSTRACKACC-210201