

# RUBIX MOBILE STORAGE 60"W

## Storage

### General Specifications

**Cabinet:** Are constructed with 3/4" thick engineered wood sides panels, sub-tops, vertical dividers and shelves. Backs are constructed with 3/4" thick engineered wood. Cabinet finish material includes high-pressure laminate and melamine with PVC edges and wood veneer with wood edges. Worksurface tops receive a high-pressure laminate surface. Cabinets 72"H or taller do not receive a worksurface top

**Frame:** Steel frame is 11 gauge 1-1/4" square steel tubing. Frame assembly is attached to cabinet using wood screws. Mobile units use 75mm twin wheel locking casters that attach via threaded inserts on underside of the steel frame assembly. Freestanding steel support legs and Mobile casters use the same threaded inserts and are interchangeable. Legs are available upon request.

- Features of various cabinet configurations includes:
- Concealed door hinges and a variety of pulls available.
  - Full extension drawers.

**Finish:** Standard powder coat on all metal parts is black; other colors may be specified. See **mtcontract** Finish and Color Guide for choices.



| Cupboard Storage (CS) |                    |      |            |
|-----------------------|--------------------|------|------------|
| Model Number          | Description        | Wgt. | List Price |
| 18" Depth             |                    |      |            |
| CS6029-18             | 60"W x 18"D x 29"H | 241  | \$2,123    |
| CS6036-18             | 60"W x 18"D x 36"H | 287  | \$2,393    |
| 24" Depth             |                    |      |            |
| CS6029-24             | 60"W x 24"D x 29"H | 248  | \$2,240    |
| CS6036-24             | 60"W x 24"D x 36"H | 295  | \$2,487    |



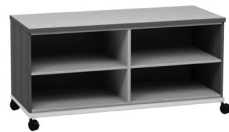
| Open Storage Alternate Shelves (OSA) |                    |      |            |
|--------------------------------------|--------------------|------|------------|
| Model Number                         | Description        | Wgt. | List Price |
| 18" Depth                            |                    |      |            |
| OSA6029-18                           | 60"W x 18"D x 29"H |      | \$1,688    |
| OSA6036-18                           | 60"W x 18"D x 36"H | 261  | \$1,870    |
| 24" Depth                            |                    |      |            |
| OSA6029-24                           | 60"W x 24"D x 29"H |      | \$1,799    |
| OSA6036-24                           | 60"W x 24"D x 36"H | 268  | \$1,964    |



| Cupboard with Open Storage (CSOS) |                    |      |            |
|-----------------------------------|--------------------|------|------------|
| Model Number                      | Description        | Wgt. | List Price |
| 18" Depth                         |                    |      |            |
| CSOS6029-18                       | 60"W x 18"D x 29"H | 228  | \$1,984    |
| CSOS6036-18                       | 60"W x 18"D x 36"H |      | \$2,211    |
| 24" Depth                         |                    |      |            |
| CSOS6029-24                       | 60"W x 24"D x 29"H | 236  | \$2,221    |
| CSOS6036-24                       | 60"W x 24"D x 36"H |      | \$2,442    |



| Cupboard with Deep Box Drawer & Lateral File Storage (CSDFSL) |                    |      |            |
|---|--------------------|------|------------|
| Model Number  | Description        | Wgt. | List Price |
| 18" Depth   |                    |      |            |
| CSDFSL6029-18   | 60"W x 18"D x 29"H | 253  | \$2,246    |
| 24" Depth   |                    |      |            |
| CSDFSL6029-24   | 60"W x 24"D x 29"H | 260  | \$2,357    |



| Open Storage (OS) |                    |      |            |
|-------------------|--------------------|------|------------|
| Model Number      | Description        | Wgt. | List Price |
| 18" Depth         |                    |      |            |
| OS6029-18         | 60"W x 18"D x 29"H |      | \$1,688    |
| OS6036-18         | 60"W x 18"D x 36"H | 261  | \$1,870    |
| 24" Depth         |                    |      |            |
| OS6029-24         | 60"W x 24"D x 29"H |      | \$1,799    |
| OS6036-24         | 60"W x 24"D x 36"H | 268  | \$1,964    |



| Cupboard with 2 Lateral File Storage Drawers (CS2FSL) |                    |      |            |
|---|--------------------|------|------------|
| Model Number  | Description        | Wgt. | List Price |
| 18" Depth   |                    |      |            |
| CS2FSL6036-18   | 60"W x 18"D x 36"H | 299  | \$2,320    |
| 24" Depth   |                    |      |            |
| CS2FSL6036-24   | 60"W x 24"D x 36"H | 308  | \$2,395    |

PLEASE NOTE: The prices shown are for reference only and are base models constructed of HPL work surfaces, TFL cabinets and doors with standard pulls, standard hinges and without locks. For detailed pricing please contact your local dealer or [mediatechnologies@mtcontract.com](mailto:mediatechnologies@mtcontract.com).

# RUBIX MOBILE STORAGE 60"W

## Storage

| Set Up Charges and Upcharges for Non-Standard and Custom Finishes |  |            |
|---|--|------------|
| Model Number  | Description  | List Price |
| Group 2 Powder Coat   | Set up charge, per color, per order, for Group 2 Powder Coat | \$312      |
| Non-Standard PVC  | Upcharge, per color, per order, for non-standard PVC         | \$865      |
| Custom Finish   | Upcharge for custom stain finish                             | \$608      |
| Non-Standard Stain  | Upcharge for non-standard stains already matched             | \$268      |
| Sprayon Finish  | Upcharge, per color, per order, for Sprayon finish           | \$312      |

Prices and specifications subject to change without notice

P-RUBIX60-230101

